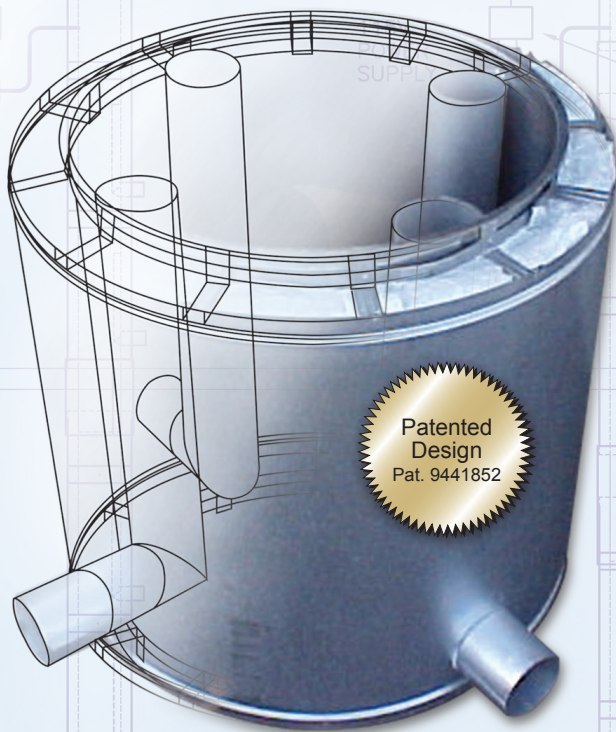


# FIRE-RATED BUILDING VENTILATION DUCT JUST GOT BETTER!

Save time and money on your next project and ask for AMPCO's  
**industry-leading all-in-one Ventilation Duct:**

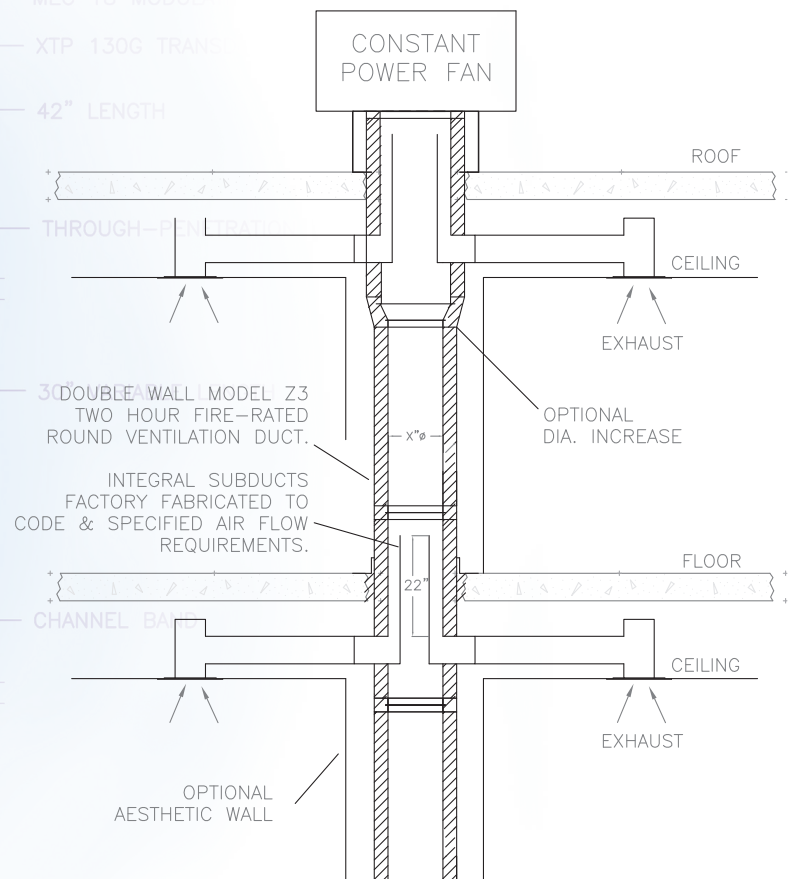
- UL/ULC classified 2-hour fire rating
- Factory built modular pressure stack design for consistent high quality and durability
- Eliminates need for separate fire-rated shaft wall construction and field fabricated ductwork (single wall duct design available for existing shaft walls)
- Low material and labor costs
- Simple and quick to install
- Available with one or more integral subducts – ideal for clothes dryers, bathroom fans or range hoods
- Limited Lifetime Warranty



A southeastern customer stated a large job, which required **20 individual fifteen-story shafts**, **saved about \$100,000** in materials alone by using this **all-in-one product**.



## TYPICAL APPLICATION MULTI-APPLIANCE / MULTI-STORY TENANT BUILDING



US: 1.800.624.8642  
CA: 1.888.735.5475  
[ampcostacks.com](http://ampcostacks.com)



ENGINEERING TOMORROW'S SOLUTIONS TODAY.





Subduct installation in major University

## Applications

In multi-story tenant spaces, the exhaust ducts from domestic kitchen, bathroom, or laundry room appliances often get merged into a common ducted fire-rated exhaust shaft.

These types of installations require individual fabricated subducts or fire dampers mounted to a common duct which is inside of a rated shaft. This configuration is both costly and complicated.

## A Better Solution

AMPCO's modular, fire-rated ventilation duct/subduct offers a better way to install multi-story exhaust systems. Similar to the design and installation of factory-built boiler flue pressure stack and grease duct, the all-in-one ventilation duct saves valuable time and money compared to the installation of separate fire-rated wall construction and field fabricated ductwork, and is backed by AMPCO's Limited Lifetime Warranty.

## External Fire Engulfment Test

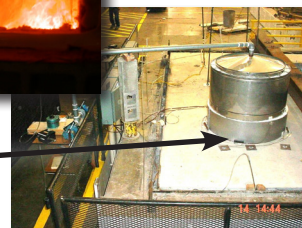
### Fire exposed duct:



- Exposed to external fire for 2 hours in large furnace getting to 1850°F
- Must maintain structural integrity

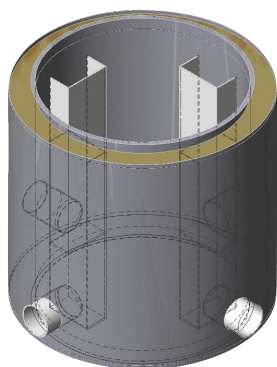


View into furnace during engulfment test



### Unexposed side of fire engulfment test assembly (fire stop):

- Must meet temperature requirements on this side
- Duct under negative pressure during fire engulfment



**MULTIPLE APPLIANCE  
OUTLETS AVAILABLE**



**AMPCO® MANUFACTURES HIGH QUALITY, FACTORY-BUILT MULTI-USE VENTILATION SYSTEMS.  
TIME-TESTED COMMERCIAL AND INDUSTRIAL INSTALLATIONS THROUGHOUT NORTH AMERICA AND GLOBALLY.**



US: 1.800.624.8642  
CA: 1.888.735.5475  
ampcostacks.com

